

# Rehoboth, MA Historical Enrollment

School District: Rehoboth, MA

12/23/2013

## Historical Enrollment By Grade

Birth Year	Births	School Year	PK	K	1	2	3	4	5	6	7	8	9	10	11	12	UNGR	K-12	PK-12
1998	111	2003-04	38	142	137	144	153	142	141	171	164	188	180	135	166	164	0	2027	2065
1999	116	2004-05	41	152	155	141	146	159	145	149	169	170	178	178	132	158	0	2032	2073
2000	103	2005-06	43	137	147	157	154	156	162	147	160	176	163	179	173	128	0	2039	2082
2001	89	2006-07	42	131	134	141	155	149	159	159	146	157	160	160	173	177	0	2001	2043
2002	104	2007-08	39	111	155	139	145	154	158	159	158	150	146	168	152	169	0	1964	2003
2003	88	2008-09	41	109	133	155	140	153	152	156	153	152	145	146	163	146	0	1903	1944
2004	108	2009-10	40	104	124	136	160	143	143	146	148	153	130	146	142	168	0	1843	1883
2005	112	2010-11	46	119	121	128	134	162	149	158	155	152	128	130	150	134	0	1820	1866
2006	104	2011-12	42	112	136	132	132	130	163	148	167	156	132	120	134	148	0	1810	1852
2007	90	2012-13	39	109	129	137	131	135	134	162	148	164	139	124	130	128	4	1774	1813
2008	88	2013-14	44	116	114	138	140	138	141	141	165	150	134	140	124	123	1	1765	1809

## Historical Enrollment in Grade Combinations

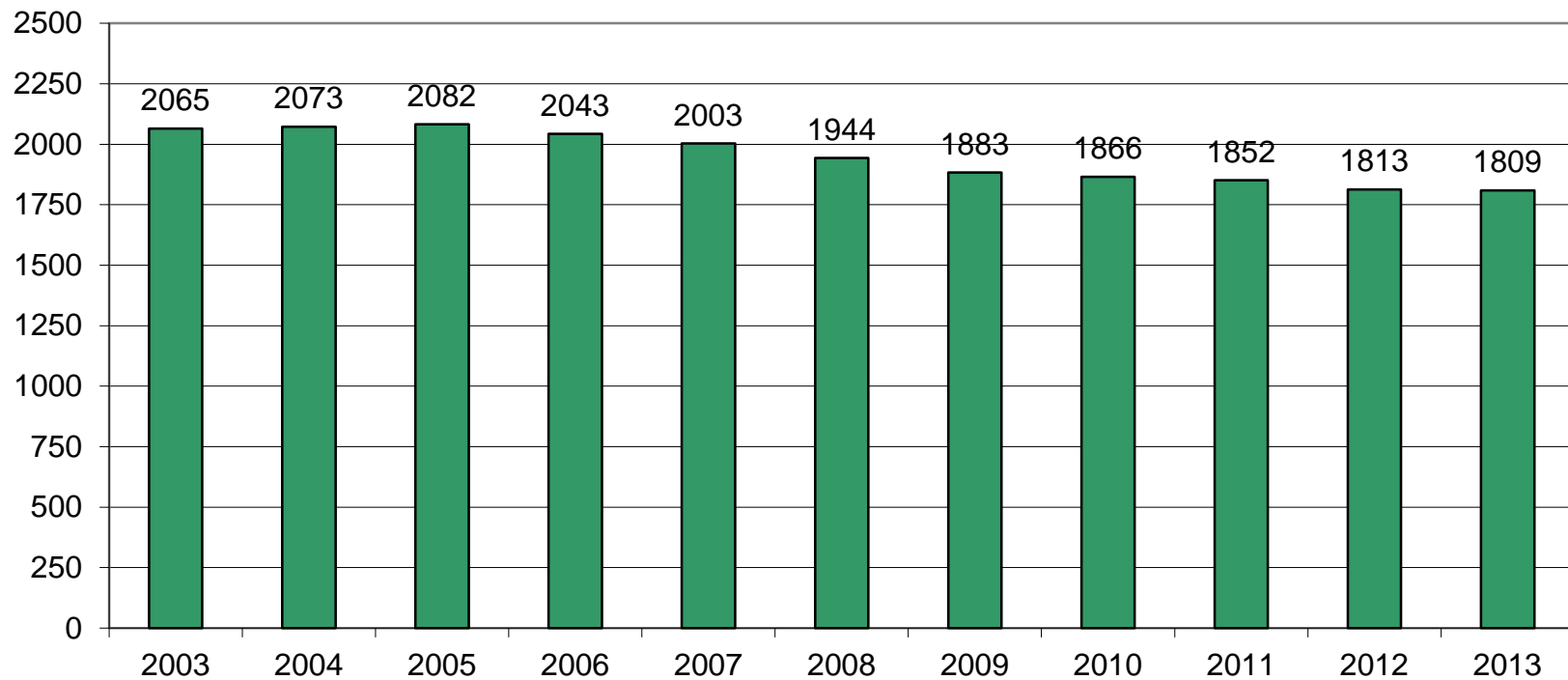
Year	K-4	PK-4	K-6	K-8	5-8	6-8	7-8	7-12	9-12
2003-04	718	756	1030	1382	664	523	352	997	645
2004-05	753	794	1047	1386	633	488	339	985	646
2005-06	751	794	1060	1396	645	483	336	979	643
2006-07	710	752	1028	1331	621	462	303	973	670
2007-08	704	743	1021	1329	625	467	308	943	635
2008-09	690	731	998	1303	613	461	305	905	600
2009-10	667	707	956	1257	590	447	301	887	586
2010-11	664	710	971	1278	614	465	307	849	542
2011-12	642	684	953	1276	634	471	323	857	534
2012-13	641	680	937	1249	608	474	312	833	521
2013-14	646	690	928	1243	597	456	315	836	521

## Historical Percentage Changes

Year	K-12	Diff.	%
2003-04	2027	0	0.0%
2004-05	2032	5	0.2%
2005-06	2039	7	0.3%
2006-07	2001	-38	-1.9%
2007-08	1964	-37	-1.8%
2008-09	1903	-61	-3.1%
2009-10	1843	-60	-3.2%
2010-11	1820	-23	-1.2%
2011-12	1810	-10	-0.5%
2012-13	1774	-36	-2.0%
2013-14	1765	-9	-0.5%
<b>Change</b>		<b>-262</b>	<b>-12.9%</b>

# Rehoboth, MA Historical Enrollment

**PK-12, 2003-2013**



# Rehoboth, MA Projected Enrollment

School District: Rehoboth, MA

12/23/2013

Enrollment Projections By Grade*																				
Birth Year	Births		School Year	PK	K	1	2	3	4	5	6	7	8	9	10	11	12	UNGR	K-12	PK-12
2008	88		2013-14	44	116	114	138	140	138	141	141	165	150	134	140	124	123	1	1765	1809
2009	94		2014-15	44	115	129	120	140	142	142	143	145	165	129	129	145	119	1	1764	1808
2010	77		2015-16	45	94	128	136	122	142	146	144	147	145	142	124	134	140	1	1745	1790
2011	91	(est.)	2016-17	45	111	105	135	138	124	146	148	148	147	125	137	128	129	1	1722	1767
2012	88	(est.)	2017-18	46	107	124	111	137	140	127	148	152	148	126	121	142	123	1	1707	1753
2013	88	(est.)	2018-19	46	107	119	131	113	139	144	129	152	152	127	122	125	137	1	1698	1744
2014	87	(est.)	2019-20	47	107	119	126	133	115	143	146	132	152	131	123	126	120	1	1674	1721
2015	86	(est.)	2020-21	47	105	119	126	128	135	118	145	150	132	131	126	127	121	1	1664	1711
2016	88	(est.)	2021-22	48	107	117	126	128	130	139	120	149	150	113	126	130	122	1	1658	1706
2017	87	(est.)	2022-23	48	107	119	124	128	130	134	141	123	149	129	109	130	125	1	1649	1697
2018	87	(est.)	2023-24	49	106	119	126	126	130	134	136	145	123	128	124	113	125	1	1636	1685

\*Projections should be updated on an annual basis.

Based on an estimate of births

Based on children already born

Based on students already enrolled

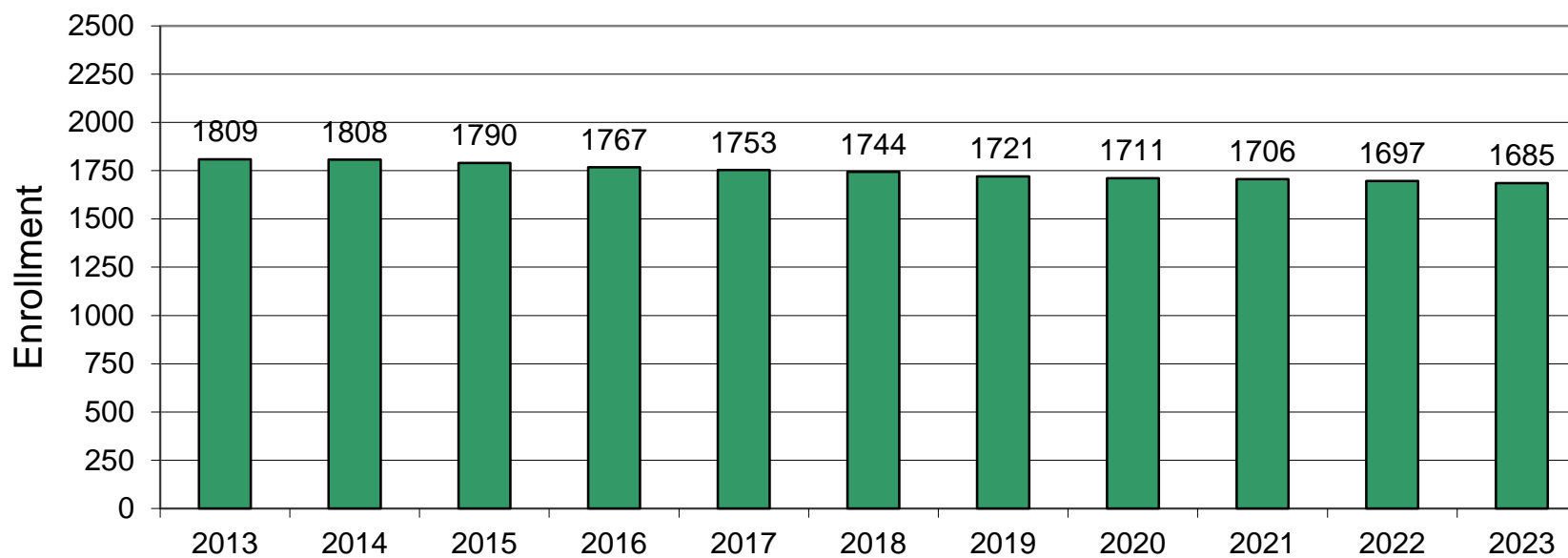
Projected Enrollment in Grade Combinations*									
Year	K-4	PK-4	K-6	K-8	5-8	6-8	7-8	7-12	9-12
2013-14	646	690	928	1243	597	456	315	836	521
2014-15	646	690	931	1241	595	453	310	832	522
2015-16	622	667	912	1204	582	436	292	832	540
2016-17	613	658	907	1202	589	443	295	814	519
2017-18	619	665	894	1194	575	448	300	812	512
2018-19	609	655	882	1186	577	433	304	815	511
2019-20	600	647	889	1173	573	430	284	784	500
2020-21	613	660	876	1158	545	427	282	787	505
2021-22	608	656	867	1166	558	419	299	790	491
2022-23	608	656	883	1155	547	413	272	765	493
2023-24	607	656	877	1145	538	404	268	758	490

See "Reliability of Enrollment Projections" section of accompanying letter.  
Projections are more reliable for Years #1-5 in the future than for Years #6 and beyond.

Projected Percentage Changes			
Year	K-12	Diff.	%
2013-14	1765	0	0.0%
2014-15	1764	-1	-0.1%
2015-16	1745	-19	-1.1%
2016-17	1722	-23	-1.3%
2017-18	1707	-15	-0.9%
2018-19	1698	-9	-0.5%
2019-20	1674	-24	-1.4%
2020-21	1664	-10	-0.6%
2021-22	1658	-6	-0.4%
2022-23	1649	-9	-0.5%
2023-24	1636	-13	-0.8%
Change		-129	-7.3%

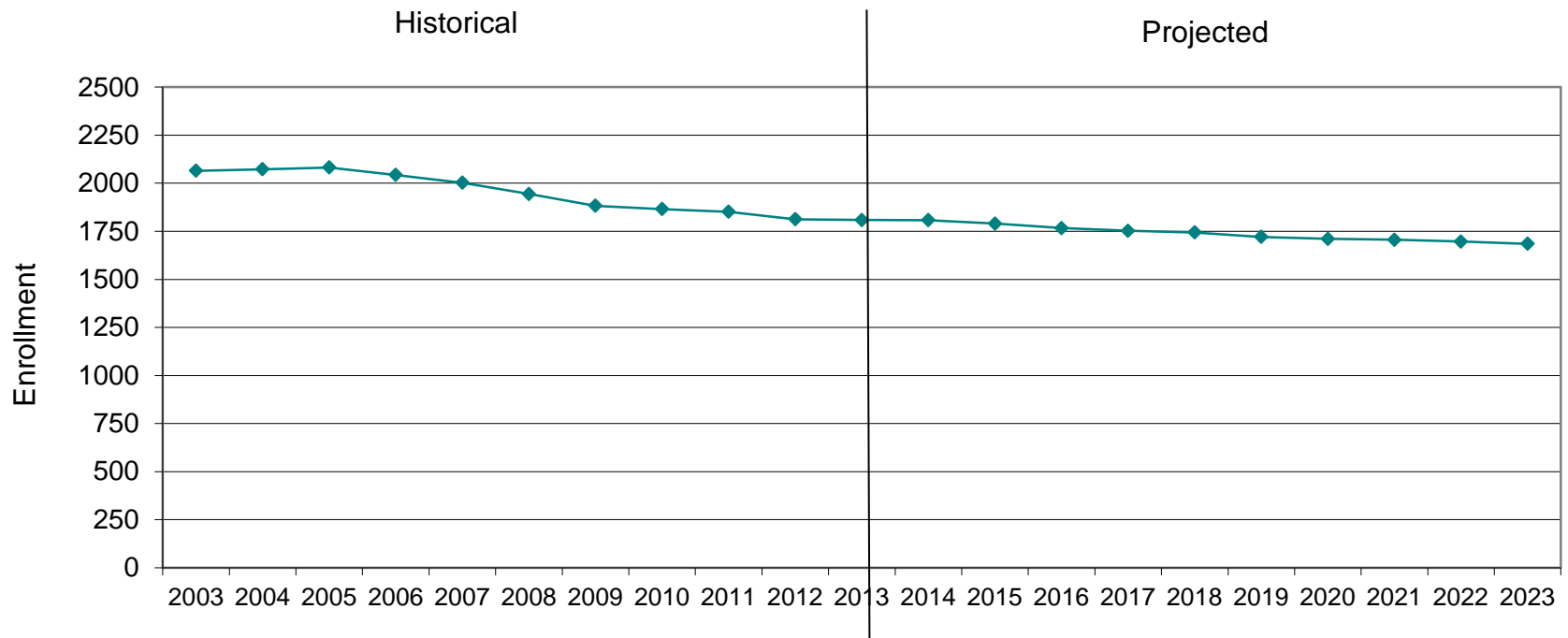
# Rehoboth, MA Projected Enrollment

PK-12 TO 2023 Based On Data Through School Year 2013-14

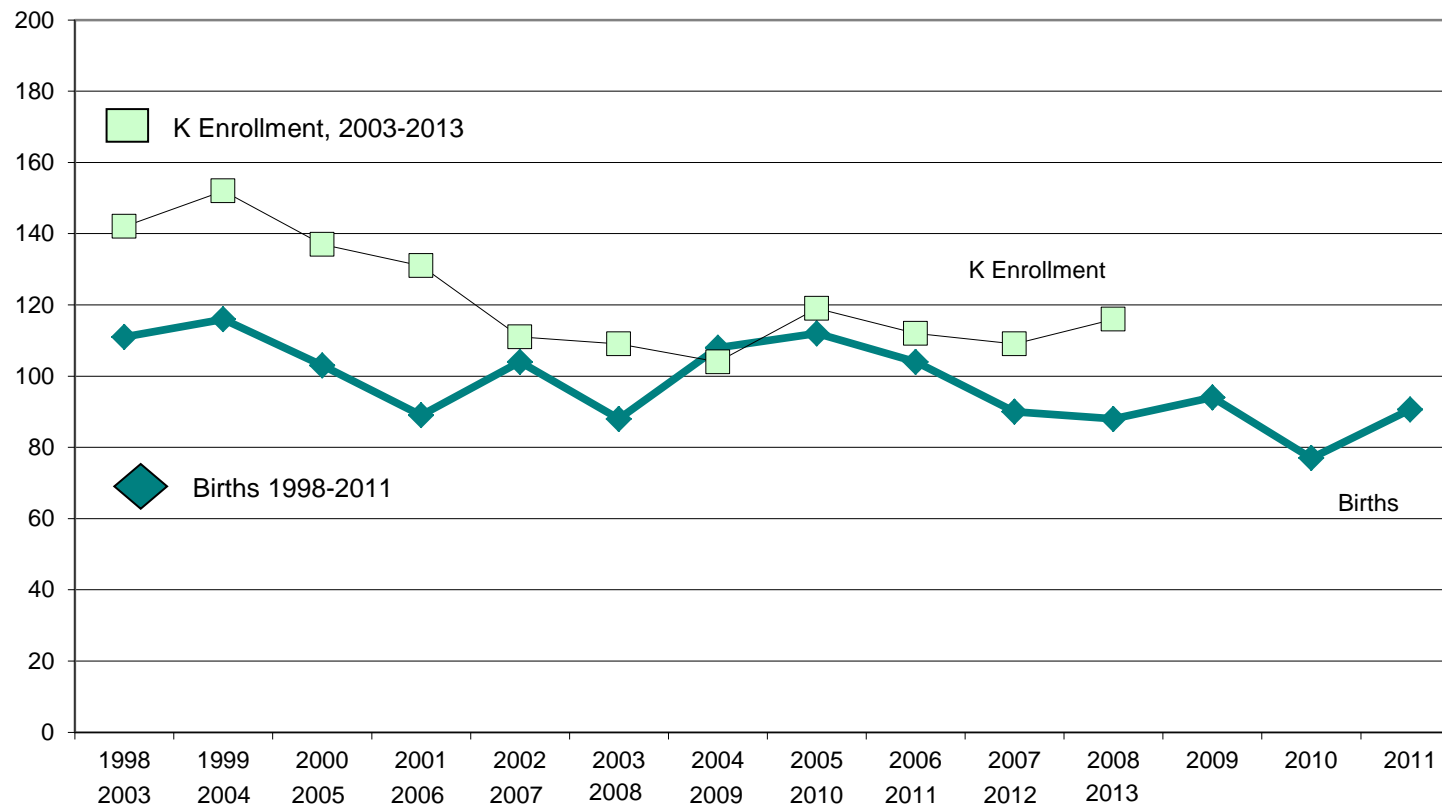


# Rehoboth, MA Historical & Projected Enrollment

**PK-12, 2003-2023**



# Rehoboth, MA Birth-to-Kindergarten Relationship



# Rehoboth, MA Additional Data

Building Permits Issued		
Year	Single-Family	Multi-Units
2005	82	0
2009	28	0
2010	21	0
2011	19	0
2012	33	0
2013	34 to Oct 31	0

Enrollment History		
Year	Voc-Tech 9-12 Total	Non-Public K-12 Total
2005-06	n/a	n/a
2009-10	n/a	n/a
2010-11	n/a	241
2011-12	31	223
2012-13	40	221
2013-14	25	n/a

Source: HUD and Building Department

Residents in Non-Public Independent and Parochial Schools (Regular Education)														
Enrollments Jan. 1, 2013	K	1	2	3	4	5	6	7	8	9	10	11	12	K-12 TOTAL
	14	7	11	15	10	16	11	12	18	22	30	31	24	221

K-12 Home-Schooled Students	
2013	26

K-12 Residents "Choiced-out" or in Charter or Magnet Schools	
2012	0

K-12 SpEd Outplaced Students	
2013	18

K-12 Choiced-In, Tuitioned-In, & Other Non-Residents	
2013	0

The above data were used to assist in the preparation of the enrollment projections. If additional demographic work is needed, please contact our office.